

Flash ETIC 114– Lyon-New Stadium –Sphérical Bearings with Uplift system

Owner : OL Groupe

Etude Gros Œuvre –Design and Calculation: CTE and JR (Jaillet-Rouby)

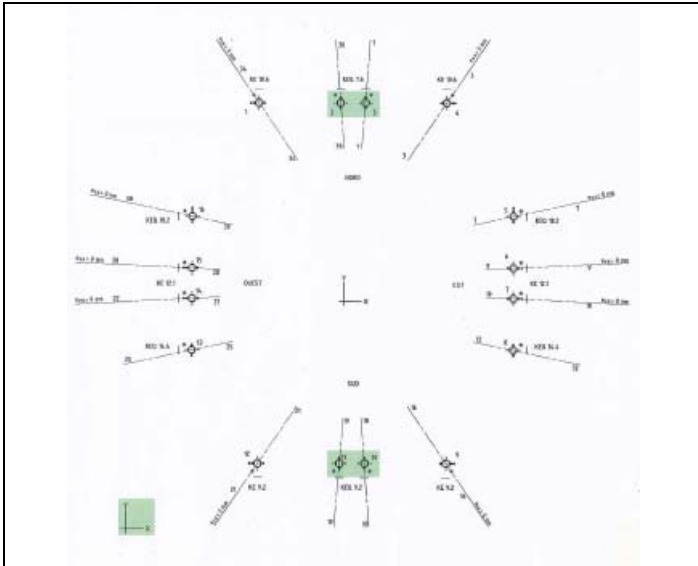
Entreprise-Contractor: Stade de Lyon Construction -VINCI- MARTIFER

ETIC : Spherical Bearings with technical assistance

Quantities : 16 Spherical Bearings 18 300KN to 7700KN –Uplift 2000KN to 200KN details below

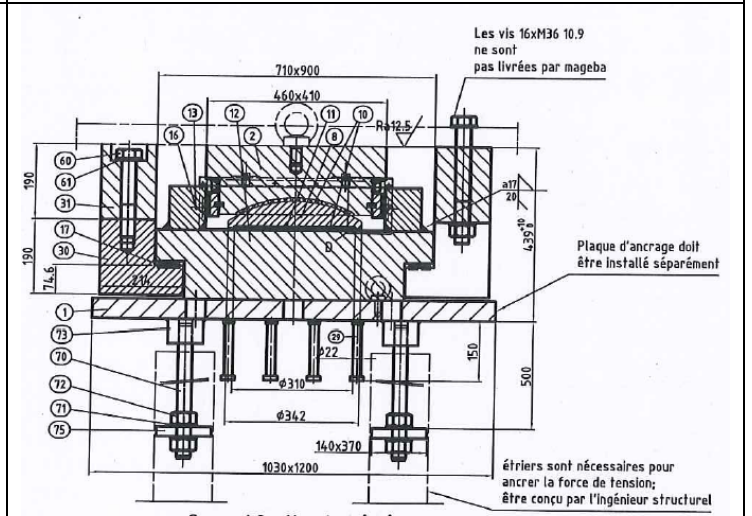
FOR OPTION WITH SLIDING PLATE ON THE SUBSTRUCTURE

Position	Bearing	Lower dimensions x-y	Upper dimensions x-y	Bearing height
[-]	[-]	[mm]	[mm]	[mm]
1, 4	KE 10.6 UPLIFT	1200x1080	1160x1080	379+bellows
2, 3	KEQ 7.6 UPLIFT	1030x1200	1030x1140	385+bellows
5, 16	KEQ 18.2 UPLIFT	1140x1240	1000x870	308+bellows
6, 7, 14, 15	KE 12.1 UPLIFT	1180x1080	810x950	324+bellows
8, 13	KEQ 14.4 UPLIFT	1120x1150	950x780	324+bellows
9, 10, 11, 12	KE 9.2 UPLIFT	1300x1040	790x1040	356+bellows
				bellows = 30 to 50



16 Spherical Bearings type Guided 7700 to 18 300 KN – Uplift -200 KN– 2000KN

General View of the site



Spherical Bearings with upper sliding plate

Coupe / Section A-A (1:7) Transversal View with Uplift System